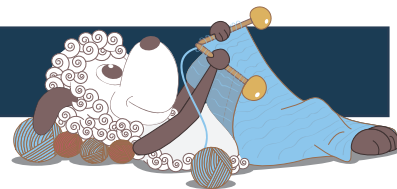


# Papillon - a feminine top with butterflies



Design: Rachel Søgaard

*Papillon is a little feminine top with butterflies fluttering about the body. The top has lots of gorgeous details: delicate little sleeves and a neck edge with a little slit at the front.*

4<sup>th</sup> English edition - February 2025 © Filcolana A/S  
English translation: Signe Strømgaard

## Materials

200 (200) 250 (250) g Merci by Filcolana in colour 604 (Kattegat)  
3 mm circular needle, 60 cm  
3 mm double-pointed needles  
Stitch markers

## Sizes

S (M) L (XL)

## Measurements

Body, chest: 80-88 (89-96) 97-104 (105-112) cm  
Top, chest: 90 (98) 106 (114) cm  
Sleeve length: 9 (10) 11 (12) cm  
Total length: 47 (51) 54 (57) cm

## Gauge

27 sts and 35 rows in stockinette stitch on a 3 mm needle = 10 x 10 cm.

## Special abbreviations

**Skp:** slip 1 stitch, knit the next stitch, pass the slipped stitch over the knitted stitch.

**Ssp:** Slip, slip, purl. Slip two stitches, one at a time as if to knit, pass the stitches back on the left needle and purl them together



### Special techniques

**Short rows - GSR (German short rows):** Work to where the turn needs to be, turn, then slip the first stitch purl-wise with the yarn held in front. Bring the working yarn up and over the needle and down on the other side, pulling hard enough on the yarn to make the stitch on the needle look like a double stitch (the 2 legs of the stitch are visible). Continue row as pattern describes.

When working across the stitch that looks like a double stitch, work it as 1 stitch, either knitting or purling the 2 legs together, as the pattern describes.).

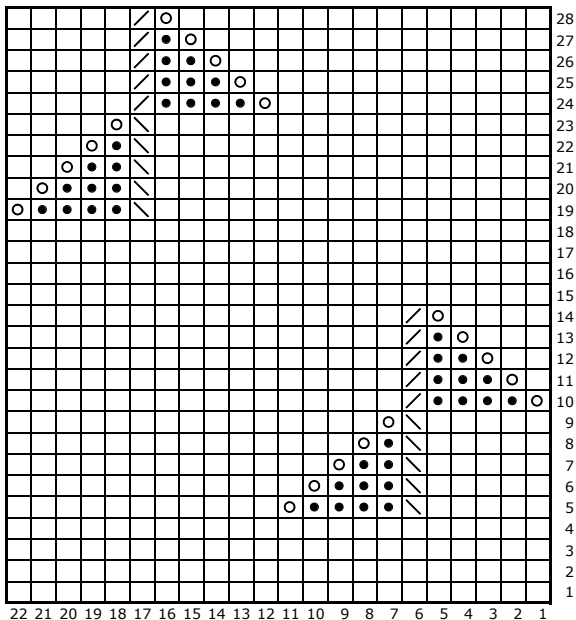
### Directions for knitting

The sleeves and body are worked in the round from the bottom up. The sleeves are worked in stockinette stitch, while the body is worked in a lace pattern. The sleeves and body are joined for the yoke, which is worked with raglan decreases. The neck edge is worked back and forth.

Note: As much as possible work only whole butterflies by working the entire lace pattern on the front and back. If working partial butterflies, take care to match every decrease with a corresponding yarn over – this is important to maintain the correct number of sts.



### Chart



- knit on right side, purl on wrong side
- purl on right side, knit on wrong side
- yarn over
- skp
- k2tog

### Body

Cast on 222 (242) 266 (290) sts on a 3 mm circular needle using the long-tail cast-on method. Join in the round and place a marker for the beginning of the round. Work 7 cm of k1, p1 rib.

Now knit 1 round, while increasing evenly to 242 (264) 286 (308) sts across the first round. Place a second marker after 121 (132) 143 (154) sts. Now work in the charted pattern, starting with row 15 (1) 15 (1) and repeating all the rows of the pattern until the work measures approx. 28 (31) 33 (35) cm. End on row 5 (27) 21 (15) of the chart.

Next round: Remove marker, work the first 0 (16) 11 (6) sts according to row 6 (28) 22 (16) of the chart, bind off the next 5 (7) 6 (6) sts, work in pattern to 111 (119) 131 (141) sts on needle after bound off sts, bind off next 10 (13) 12 (13) sts, work in pattern to the last 5 (6) 6 (7) sts of the round. Bind off these last sts.

Let the body rest on the needle, while the sleeves are being knitted.

### Sleeves

Cast on 74 (80) 86 (92) sts on 3 mm double-pointed needles. Join in the round and place a marker for the beginning of the round. Work 5 cm of k1, p1 rib. Continue in stockinette stitch, while increasing to 93 (100) 107 (114) sts evenly across the first round. Work straight in stockinette stitch until the sleeve measures 9 (10) 11 (12) cm.

Next round: Bind off the first 5 (7) 6 (6) sts, knit to the last 5 (6) 6 (7) sts, bind off these last sts. There are now 83 (87) 95 (101) sts left.

Work a second sleeve the same way as the first.

## Yoke with raglan decreases

Join the sleeves to the body on the circular needle by placing the sleeve sts over where sts were bound off for the armholes. There are a total of 388 (412) 452 (484) sts on the needle.

On the first round (which is row 7 (1) 23 (17) of the chart) knit together 1 stitch from each section at the joins between sleeves and body. Place a marker around each of the resulting 4 sts. The beginning of the round is at the marked stitch between the right sleeve and the back. Continue working in pattern across front and back, while the sleeves are worked in stockinette stitch.

Raglan decrease round: \*P1, ssp, work in pattern to 2 sts before the marked stitch, p2tog, p1, ssp, work in stockinette stitch to 2 sts before marked stitch, p2tog \*, repeat from \* to \* once more.

Work a raglan decrease round every other round, while the marked sts and 1 stitch on each side of them are purled on all rounds, until a total of 25 (28) 31 (34) decrease rounds have been worked. There are now 184 (184) 200 (208) sts. End on a round without decreases.

Break the yarn and join it again to the middle stitch of the front. Now work in the round with raglan decreases as before to 19 (20) 21 (22) sts before the middle stitch of the front where the yarn was re-joined, turn. Work in pattern from the WS to 19 (20) 21 (22) sts before the middle stitch of the front, turn. Work in pattern from the RS with raglan decreases to 2 (3) 5 (5) sts before the last turn, turn. Work in pattern from the WS to 2 (3) 5 (5) sts before the last turn, turn. Work in pattern from the RS with raglan decreases to 2 sts before the last turn, turn. Work in pattern from the WS 2 sts before the last turn, turn.

Work in the round from the WS with decreases, while at the same time marking the centre 17 sts of each sleeve (all sizes) and work decreases across these sts as follows: [k2tog] 4 times, k1, [skp] 4 times, work the the middle stitch of the front and increase 1 stitch in this stitch, turn. There are now 144 (144) 160 (168) sts on the needle.

Now work 2,5 cm back and forth in k1, p1 rib. Bind off in rib from the WS.

## Finishing

Weave in all ends.

Sew the little hole under each sleeve.