



Moonlight

Design: Helle Kampp Mathorne // Kampp Design

The inspiration for Moonlight was found in Løfberg and Noack's studio, where the colours blue and gold appear as a recurring element in both ceramics, drawings, and paintings. Blue and gold are seen in ballpoint pen drawings and moon motifs adorned with gold leaf, as well as in gold beads and droplets that feature in ceramic reliefs and jewellery



Sizes & measurements

S (M) L (XL) 2XL (3XL)

Fits chest circumference

90 (98) 106 (116) 126 (136) cm

Chest circumference (A)

100 (108) 115 (126) 138 (145) cm

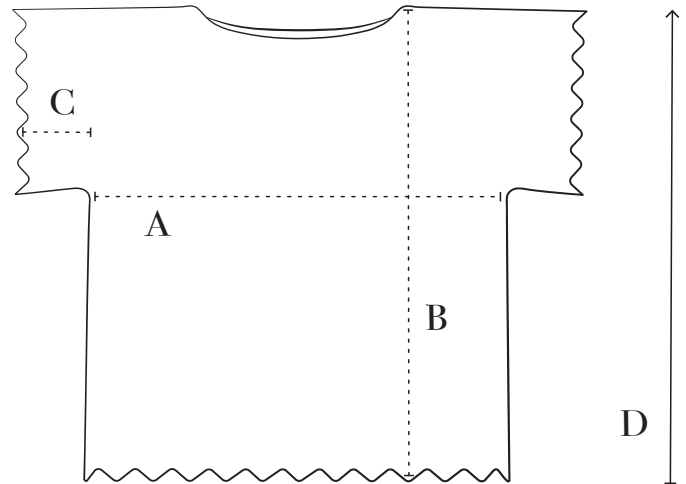
Full length (C)

52 (53) 54,5 (55,5) 57 (58,5) cm

Sleeve length (E)

5 cm

Crochet direction (D)



Materials

YARN FROM FILCOLANA

Merci colour 604 (Kattegat)

250 (300) 300 (350) 400 (400) g

Paia colour 703 (Gold Shimmer)

25 g (all sizes)

Recommended crochet hook

3,5 mm

You will also need

2 stitch markers

Gauge

26 stitches and 13 rows, crocheted in pattern from chart 1, using 1 thread of Merci and a 3,5 mm hook = 10 x 10 cm.

The gauge is measured after blocking.

The hook size is only a guide. If you have more stitches in 10 cm, change to a larger hook. If you have less stitches in 10 cm, change to a smaller hook.



Technique

ABBREVIATIONS

The pattern uses US terms

ch: chain stitch(es)

edge-st: edge stitch

sl st: slip stitch

st(s): stitch(es)

sc: single crochet

dc: double crochet

tr: treble

Puff stitch

A puff stitch is a group of 6 half double crochet made into the same stitch and joined at the top.

Yarn over, insert hook in the stitch, yarn over, and pull through the stitch, repeat from * to * 5 times more in the same stitch. Now there are 13 loops on the hook. Yarn over again, and pull through all loops on the hook. Chain 1 to close the puff stitch.

Picot

Chain 3, make 1 slip stitch into the first chain.

SPECIAL TECHNIQUES

Foundation chain

Be careful not to make the chain stitches of the foundation too tight, otherwise it can be very difficult to make the first round.

Make sure to not crochet with only the tip of the hook – let each stitch be formed on the neck of the crochet hook, where the hook measures 3,5 mm.

Edge stitch

Edge stitch used at the beginning of a row on back and front = ch 3.

Edge stitch used at the beginning of a row in edges = ch 2.

Workflow

There are written instructions and a chart that shows the pattern repeat. It is made bottom-up in rows. Back and front are made separately, and the shoulders and side seams are joined with single crochet from the wrong side.

The lacy edging on the sleeves and hem and the edging in the neck opening is made in the round.

Charts

The charts are at the end of the pattern.

Chart A

The chart is made in rows. You read the chart from the bottom. On the right side you read from right to left and on the wrong side from left to right.

Repeat rows 2-6 of the chart.

Chart B

The chart shows the pattern made in the round. You read the chart from the bottom. Read each round from right to left.

The row with puff stitches is made using 1 thread Paia.

Pattern

BACK

The back is made in rows as described in the following and as shown in chart 1.

Ch 133 (141) 149 (165) 181 (189) using 1 thread of Merci and a 3,5 mm hook.

NOTE! Don't make the chain stitches too tight.

Row 1: Begin in the 4th ch from the hook (the skipped chs counts as 1st st), * 1 dc, skip 1 ch, ch 1 *, repeat from * to * to last 2 chs, 2 dc. Turn.

Row 2: 1 edge-st, 1 dc, * skip (1 ch + 1 dc + 1 ch), in next st make: 3 dc + 2 ch + 3 dc (= shell), skip (1 ch + 1 dc + 1 ch), make 1 dc in next dc*, repeat from * to * to last st, 1 dc. Turn.

Row 3: 1 edge-st, 1 dc, 3 ch, 1 sc in the ch-space of the shell, 3 ch, * 1 dc in dc between the shells, 3 ch, 1 sc in the ch-space of the shell, 3 ch*, repeat from * to * to last 2 sts, 2 dc. Turn.

Row 4: 1 edge-st, 1 dc, * 1 ch, 1 dc in ch-space, ch 1, 1 dc in sc, ch 1, 1 dc in ch-space, ch 1, 1 dc in dc, *, repeat from * to * to last st, 1 dc. Turn.

Row 5: 1 edge-st, 1 dc, * 1 dc in ch-space, 1 dc in next dc*, repeat from * to * to last st, 1 dc. Turn.

Row 6: 1 edge-st, 1 dc, * 1 ch, skip 1 dc, 1 dc in next dc*, repeat from * to * to last st, 1 dc. Turn.

Repeat rows 2-6, until the piece measures approximately 25 cm – end with a row 3.

NOTE! If you want the sweater shorter or longer, you can skip or add a pattern repeat but still ending with a row 3.

Arm opening

Increase for the sleeve opening at each side over 3 rows (when all increases are made, the new sts become part of the pattern) in the following way:

Row 1 with increases:

Make 6 ch, 1 dc in the 4th ch from the hook, ch 1, skip 1 ch, 1 dc in next ch, ch 1, skip the edge-st, 1 dc in next dc, continue in pattern to the edge-st.

Join a new piece of yarn (approx. 30 cm), join it to the 3rd ch of the edge-st, and ch 5.

Break yarn, pull the yarn end through last ch and pull tight (= 4 ch). Continue the row where you stopped right before the edge-st, and make 1 ch, skip the edge-st, 1 dc, ch 1, skip 1 ch, 1 dc in each of the next 2 ch. Turn.

Row 2 with increases:

Ch 3, 2 dc in edge-st, continue in pattern to edge-st, and make 3 dc in edge-st. Turn.

Row 3 with increases:

3 ch and 1 dc in the same stitch, ch 1, 1 dc in next st, continue in pattern to edge-st at **left side**, and make 2 dc in edge-st. Turn.

Now there are 147 (155) 163 (179) 195 (203) sts.

On the next row you will continue the pattern over the new sts. Each row starts with 1 edge-st and 1 dc and ends with 2 dc.

Continue in pattern without increasing, until the piece measures approximately 46 (46) 48.5 (50) 50 (52.5) cm in the middle. End with row 5 (6) 3 (4) 6 (3) of pattern.





Place a stitch marker on each side of the center 67 (67) 71 (71) 75 (75) sts.

Neck

Right side of neck and shoulder

Make 1 edge-st, 1 (2) 2 dc, ch 1, skip 1 st, *1 dc, ch 1, skip 1 st*, repeat from * to * to last st before the first marker, 1 sc in last st. Fasten off.

Left side of neck and shoulder.

Join yarn on the other side of the next marker. 1 sc, ch 1, skip 1 st, *1 dc, ch 1, skip 1 st*, repeat from * to * to the last 2 sts, 2 dc. Fasten off.

Join yarn on the other side of marker. 1 sc, 1 dc in each st to end. Fasten off.

FRONT

Make the front in the same way as the back until piece measures approximately 44.5 (45.5) 47 (48.5) 49 (49.5) cm in the middle. End with row 3 (3) 6 (3) 3 (6) of the pattern.

Place a stitch marker on each side of the center 55 (55) 59 (59) 63 (63) sts.

Neck

Only size S, M, XL and 2XL

Right side of neck and shoulder

Row 4: 2 dc, *1 ch, 1 dc in ch-space, ch 1, 1 dc in sc, ch 1, 1 dc in ch-space, ch 1, 1 dc in dc*, repeat from *

to * to ch after last dc before the first marker, ch 1, 1 dc in ch-space, ch 1, 1 sc in sc. Turn.

Row 5: Sl st over the next 4 sts – the last sl st should be placed in the 2nd dc from the edge st, make 1 ch and 1 sc in same st, *1 dc in ch-space, 1 dc*, repeat from * to * to end of row. Turn.

Row 6: 1 edge-st, 1 dc, *1 ch, skip 1 dc, 1 dc*, repeat from * to *, to last 5 sts, ch 1, skip 1 dc, 1 sc. Fasten off.

Left side of neck and shoulder.

Row 4: Join yarn on the other side of next marker.

Make 1 ch and 1 sc in same st, *1 ch, 1 dc in ch-space, ch 1, 1 dc in dc*, repeat from * to * to last 2 sts, and end row with 1 ch, 2 dc. Turn.

Row 5: 1 edge-st, 1 dc, *1 dc in ch-space, 1 dc*, repeat from * to *, to last 6 sts, 1 dc in ch-space, 1 sc. Turn.

Row 6: Sl st over the next 3 sts, 1 ch and 1 sc in same st, ch 1, skip 1 dc, *1 dc, ch 1, skip 1 dc*, repeat from * to * to the last 2 sts, and end row with 2 dc. Fasten off.

Only size L and 3XL

Right side of neck and shoulder

Row 2: 1 edge-st, *1 dc, skip 1 dc, 3 dc + 2 ch + 3 dc in next dc, skip 1 dc, 1 dc in next dc*, repeat from * to * to dc before first marker, 1 sc. Turn.





Row 3: Sl st over the next 4 sts, 1 ch and 1 sc in same st, * 3 ch, 1 dc, 3 ch, 1 sc *, repeat from * to * to the last 2 dc, 3 ch, 2 dc. Turn.

Row 4: 1 edge-st, 1 dc, ch 1, 1 dc in ch-space, * 1 ch, 1 dc in sc, ch 1, 1 dc in ch-space, 1 dc in dc *, repeat from * to * to last ch-space, ch 1, 1 sc in the center st of the ch-space. Fasten off.

Left side of neck and shoulder

Row 2: Join yarn in dc on the other side of next marker. 1 ch and 1 sc in same st, skip 1 dc, * 3 dc + 2 ch + 3 dc in next dc, skip 1 dc, 1 dc in next dc, skip 1 dc *, repeat from * to * to last 2 sts, 2 dc. Turn.

Row 3: 1 edge-st, 1 dc, * 1 dc, 3 ch, 1 sc in ch-space, 3 ch *, repeat from * to * to and including sc in ch-space, ch 1, 1 sc in the 2nd to last dc of the shell. Turn.

Row 4: 3 sl sts, 1 sc in sc, ch 1, * 1 dc in ch-space, ch 1, 1 dc in dc, 1 ch *, repeat from * to * to last 2 sts, 2 dc. Fasten off.

All sizes

Join the shoulders and the side seams with sc from the wrong side.

SLEEVES

NOTE! Crochet into the top of dc /edge-st of each row on front and back. Begin from the right side at the bottom of the sleeve opening.

Round 1 (right side): 1 edge-st and 1 dc in same st, * 1 ch, 1 dc in next row * repeat from * to * until you reach the bottom of the sleeve opening again, and make 1 ch, 2 dc in same st, 1 ch.

Lacy edging on sleeves

The edging is described in the following and shown in **chart B**.

Round 2: 1 edge-st, * 1 dc, 1 dc in ch-space *, repeat from * to * to the last 2 sts, 2 dc, ch 1, 1 sl st in the 1st st of the round.

Break yarn.

Join Paia.

Round 3: 1 edge-st, 2 ch, skip 2 dc, * 1 puff st, 2 ch, skip 2 dc *, repeat from * to * to end of round, and end with 1 sl st in the 1st st of the round.

Fasten off.

Join Merci

Round 4: 1 ch and 1 sc in same st, * 2 sc in ch-space, 1 sc in top of puff st *, repeat from * to * to end of round, and end with 1 sl st in the edge-st.

Round 5: 1 edge-st, 2 ch, skip 2 sc, * 4 dc, 2 ch, 1 dc, 2 ch, skip 2 dc, 2 ch *, repeat from * to * to end of round, and end with 1 sl st in the edge-st.

Round 6: 4 ch, 1 tr in same st, skip ch-2, 1 sc in next dc, * (skip ch-2, 2 tr in next dc, 1 picot), repeat the stitches in parentheses 2 times more, 2 tr in next dc, skip ch-2, 1 sc in next sc *, repeat from * to * to end of round, and end with a sl st in the top of the ch 4.

Fasten off.

Lacy edging on hem

The lacy edge of the hem is made in the same way as the lacy edging on the sleeves. Begin from the right side at one side of the sweater.

NECK EDGING

Join Merci from the right side at center neck.

Round 1: 1 sc in each st and 4 sc in each ch-space. End round with 1 sl st in the 1st st of the round.

Round 2: 1 sl st in each sc. End round with 1 sl st in the 1st st of the round.

Fasten off.

FINISHING

Weave in all ends.

Wash the blouse according to the instructions on the ball band and let it dry flat on a towel.

Charts

- = chain st (ch)
- = slip st (sl st)
- × = single crochet (sc)
- ┆ = double crochet (dc)
- ┆ = treble (tr)
- = Pattern repeat
- = Puff stitch
- △ = Picot

CHART A

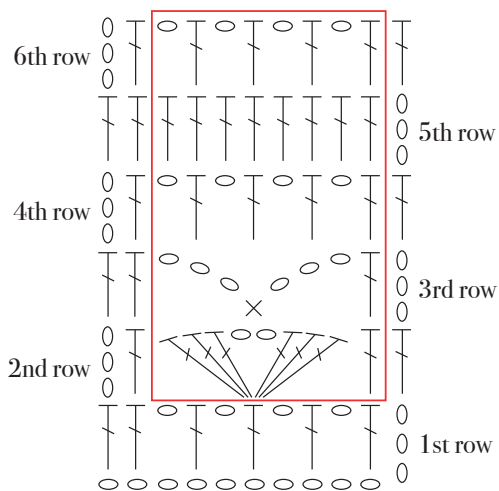


CHART B

