

# filcolana

OBSESSED WITH QUALITY YARN SINCE 1952



## Flying Magnolias

Design: Nanna Gudmand-Høyer

**Flying Magnolias is inspired by the shapes and colours in Noack's beautiful artwork of the same name. The piece is light and imaginative – who knows, perhaps magnolia flowers do transform into small flying flamingos when we look the other way?**

**The blouse reflects the lightness of the artwork, while the shapes of the magnolia flowers have inspired the lace pattern on the yoke of the blouse.**





---

## Sizes & Measurements

---

S (M) L (XL)

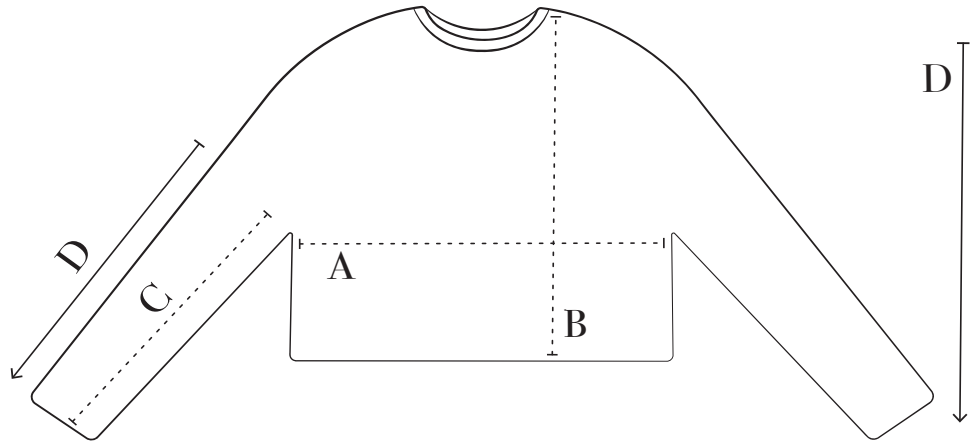
**Fits chest circumference**  
90 (98) 106 (116) cm

**Circumference (A)**  
98 (107) 114 (126) cm

**Length (B)**  
46 (48) 50 (52) cm

**Sleeve length (C)**  
37 (37) 36 (36) cm

**Knitting direction (D)**



---

## Materials

---

**YARN FROM FILCOLANA**

**Saga colour 335 (Peach Blossom)**  
150 (150) 150 (150) g

and

**Tilia colour 370 (Flamingo)**  
75 (75) 100 (100) g

**The entire work is knitted with 1 strand of each yarn held together.**

**NEEDLES**

Circular needle 4 mm, 60 cm

Circular needle 5 mm, 40 and 60 cm

**EXTRAS**

7 (8) 8) 9) 9) Stitch markers, one of which is different from the others (beginning of round marker)

2) 2) Stitch holders

---

## Gauge

---

17,5 sts and 26 rounds in stockinette, with 1 strand of each yarn held together, knitted on 5 mm needle = 10 x 10 cm.

The gauge is measured after washing.

The needle size is for guidance only.

If you have more stitches per 10 cm, change to bigger needles, if you have fewer stitches per 10 cm, change to smaller needles. If you meet the width but not the height, it can help to change the needle type, for example, to go from metal to wood, or vice versa.

---

## Technique

---

### ABBREVIATIONS

**st(s):** stitch(es)

**k:** knit

**p:** purl

**tog:** together

**tbl:** through the back loop

**RS:** right side

### SKP

Slip 1 st knit wise, k1, pass the slipped st over

### SPECIAL TECHNIQUES

#### Short row stitch

Slip 1 st st onto right-hand needle with yarn in front. Tug the yarn up and over the right-hand needle (away from yourself). This creates a double stitch. Continue working the row as instructed in the pattern. On next row work the double sts together as either k2tog or p2tog depending on what the stitches indicate. This technique is called German Short Rows.

#### Backward loop cast on

Make a loop of yarn as follows: place the long tail (with the skein of yarn at the other end), over the thread that is on the needle. Knit through this loop with the right needle from the front and pull tightly so that the ring becomes a stitch.

Repeat this for the desired number of stitches.




---

## Workflow

---

Flying Magnolias is knitted top-down with a lace pattern on the yoke, while the rest of the blouse is worked in reverse stockinette stitch.

First, short rows are worked on the yoke to shape the neckline. Then, the lace pattern on the yoke is knitted according to the chart. Once the chart is completed, the work is turned to the wrong side, and knitting continues in knit stitch. The rest of the blouse is finished from the wrong side.

---

## Chart

---

The charts are located at last page in the pattern.  
NOTE: The charts are divided according to size.

The chart is read from bottom and up and from right to left on all rounds.



---

# Pattern

---

**YOKE**

Cast on 64 (72) 72 (80) sts on 4 mm needle and 1 strand of each yarn held together. Use the long tail cast on method.

Knit 4 rows back and forth on the needle, the first row is a right-side row.

Change to 5 mm circular needle, 40 cm (change to longer circular needle when more sts are added to the round).

**Next row (RS):** \*P1, k3, p1, k3, insert marker on right-hand needle\*, repeat from \* to \*, to end of row.

The last inserted marker is the beginning of round marker.

Do not turn work but join to a round.

Now work short rows back and forth, to raise the neck and secure a good fit, as follows:

**1st short row (RS):** Work 15 (19) 19 (23) sts stitch wise, knit the knit sts, purl the purl sts, turn work.

**2nd short row:** 1 short row st, work all sts stitch wise to 14 (18) 18 (22) sts after the beginning of round marker, turn work.

**3rd short row:** 1 short row st, work all sts stitch wise to 19 (23) 23 (27) sts after the beginning of round marker, turn work.

**4th short row:** 1 short row st, work all sts stitch wise to 18 (22) 22 (26) sts after the beginning of round marker, turn work.

**5th short row:** 1 short row st, work all sts stitch wise to 23 (27) 27 (31) sts after the beginning of round marker, turn work.

**6th short row:** 1 short row st, work all sts stitch wise to 22 (26) 26 (30) sts after the beginning of round marker, turn work.

**7th short row:** 1 short row st, work all sts stitch wise to 27 (31) 31 (35) sts after the beginning of round marker, turn work.

**8th short row:** 1 short row st, work all sts stitch wise to 24 (30) 30 (34) sts after the beginning of round marker, turn work.

**Size XL only**

**9th short row:** 1 short row st, work all sts stitch wise to - (-) - (39) sts after the beginning of round marker, turn work.

**10th short row:** 1 short row st, work all sts stitch wise to - (-) - (38) sts after the beginning of round marker, turn work.

**All sizes**

**Last short row (RS):** 1 short row st, work all sts stitch wise to the beginning of round marker.





All short rows are now completed, and all sts are worked in the round again.

**Next round:** Work all sts stitch wise.

Work 1st – 58th row of the chart for your chosen size, the chart is repeated once after each marker.

Turn the work to the wrong side (rest of work is worked in knit sts from the wrong side), as follows:

**Next round:** 1 short row st, knit to end of round and remove all markers as you go, except for the beginning of round marker.

Knit 2 (4) 6 (8) rounds.

Divide work into body and sleeves and work each part separately as follows:

**Next round:** K35 (40) 42 (47), slip the next 42 (47) 52 (58) sts to a stitch holder, cast on 8 (6) 8 (8) sts with the backward loop cast on technique, k79 (89) 93 (103), slip the next 42 (47) 52 (58) sts to a stitch holder, cast on 8 (6) 8 (8) sts, k42 (47) 49 (54).

## BODY

Knit in the round for 18 (19) 20 (21) cm.

Change to 4 mm needle.

## Hem

Knit 5 rows back and forth on the needle.  
Bind off all sts knit wise, not to firm.

## SLEEVES

Slip the resting sleeve sts to a 5 mm circular needle. Using 1 strand of each yarn held together, cast on 4 (3) 4 (4) sts in extension to the sts on the needle, insert a beginning of round marker and cast on another 4 (3) 4 (4) sts, knit to end of round.

Now there are 50 (53) 60 (66) sts on the needle.

#

Knit 8 rounds.

**1st decreasing round:** Knit to 3 sts before the beginning of round marker, k2tog, k1.

**2nd decreasing round:** K1, SKP, knit to end of round.

#

Work from # to #, a total of 8 times = 34 (37) 44 (50) sts.

Continue straight in knit sts, to sleeve measures 35 (35) 34 (34) cm from the armhole.

Change to 4 mm needle.

## Hem

Knit 5 rows back and forth on the needle.  
Bind off all sts knit wise, not to firm.

Work the other sleeve the same way.

## FINISHING

Turn the sweater to the right side for seaming.

Sew the small slits on the body and sleeve edges together.

Join the armholes using Kitchener stitches.

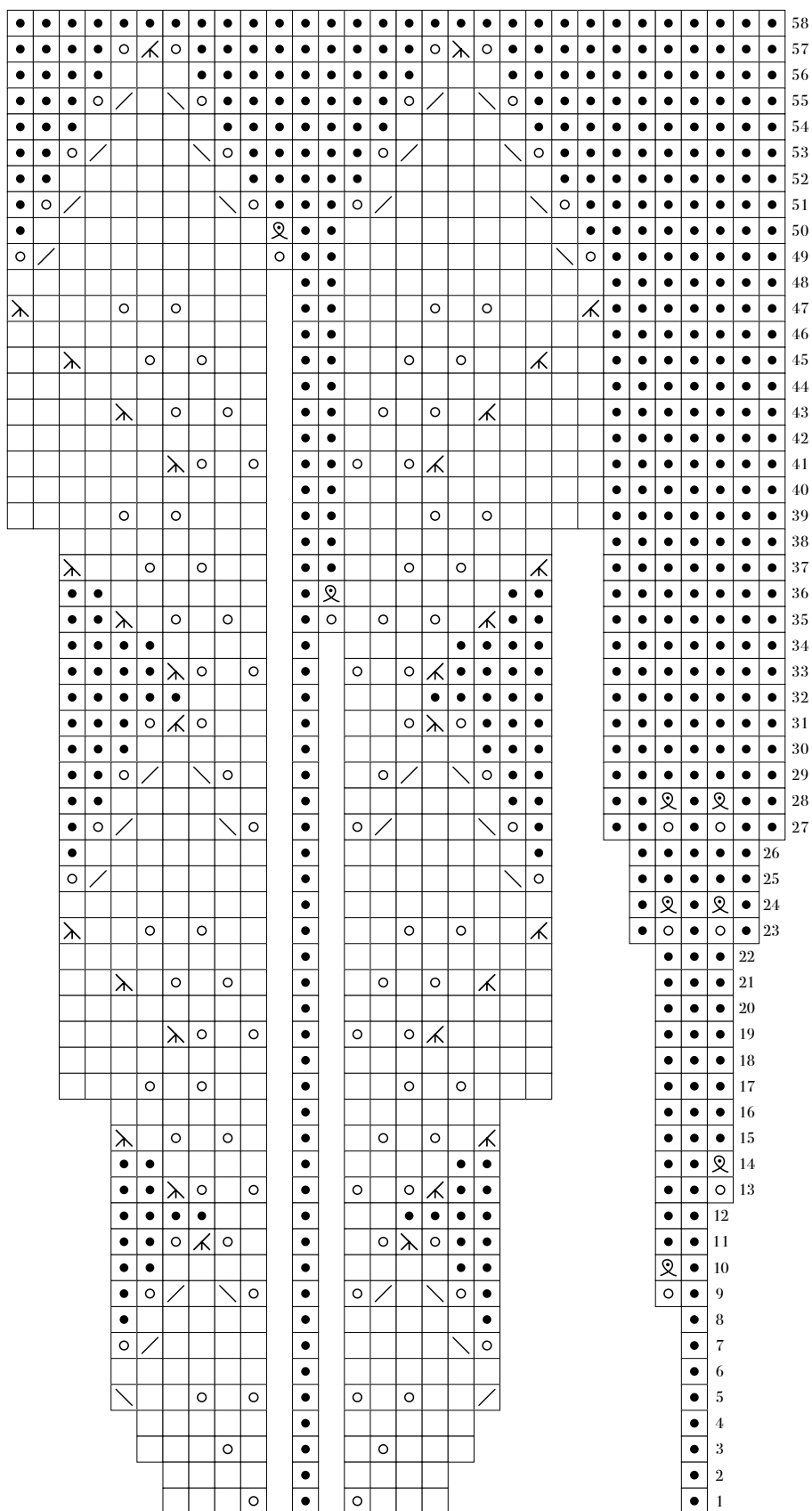
Weave in all ends on the wrong side.





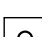
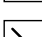
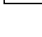

Wash the sweater according to washing instructions on the ball bands and leave it flat to dry on a towel.





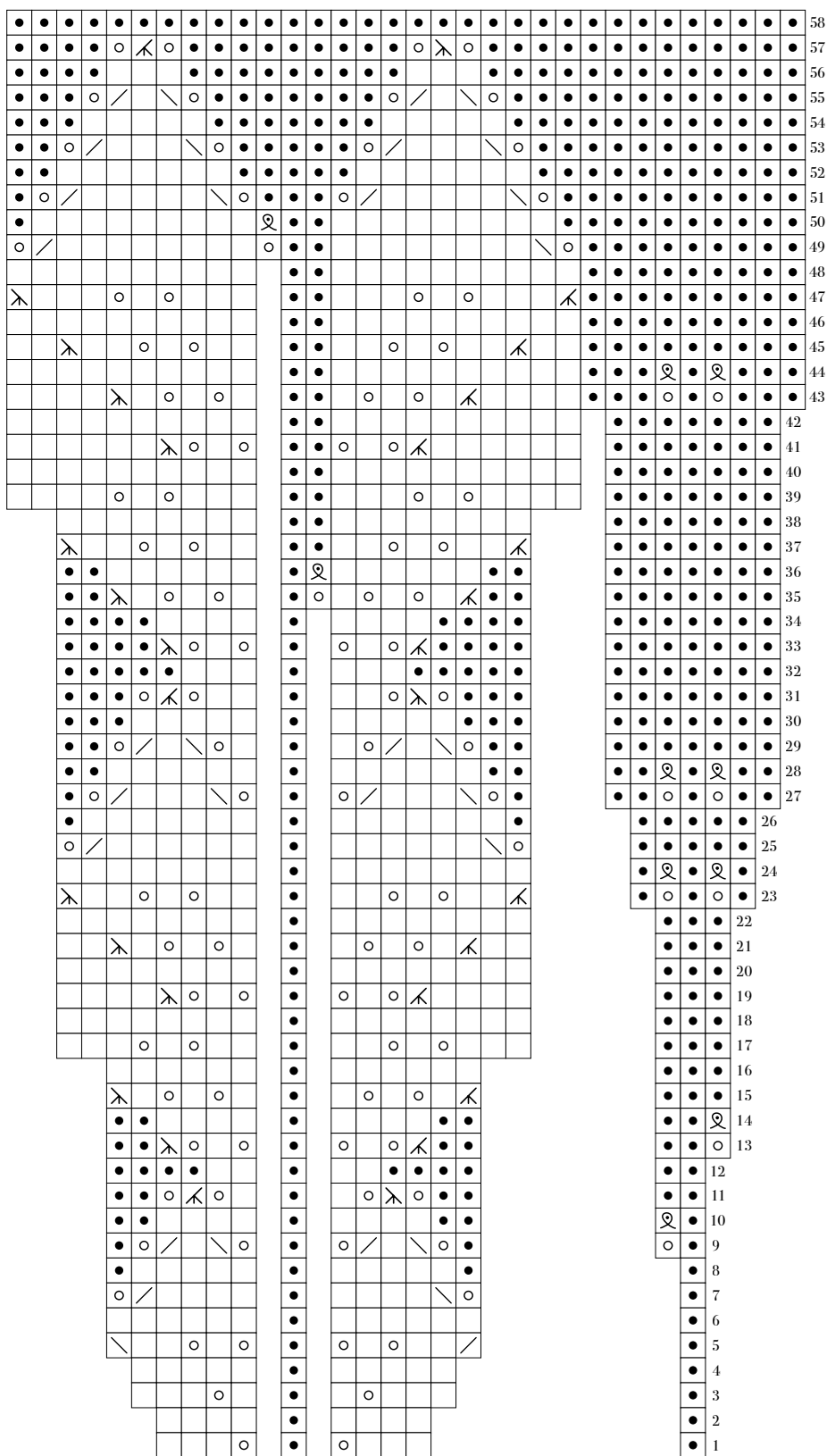
# Chart, size S and M











-  Knit
-  Purl
-  K2tog tbl
-  K2tog
-  Yarn over
-  Slip 3 sts knit wise one after the other, slip the sts back to left-hand needle and k3tog tbl.
-  K3tog
-  Purl tbl



# Chart, size L and XL



-  Knit
-  Purl
-  K2tog tbl
-  K2tog
-  Yarn over
-  Slip 3 sts knit wise one after the other, slip the sts back to left-hand needle and k3tog tbl.
-  K3tog
-  Purl tbl