

# filcolana

OBSESSED WITH QUALITY YARN SINCE 1952



## Spring Veneer

Design: Rikke Eliassen // Strikrik

**The inspiration for this summer version of the Veneer sweater comes from Noack's delicate pastel universe. Spring Veneer is both feather-light and elegant in its simplicity. The feminine expression is accentuated by the subtle pattern that gracefully wraps around the shoulders on the yoke. The combination of lightness and soft colours makes the design timeless, while also feeling modern and relevant**





---

## Sizes & Measurements

---

**XS (S) M (L) XL (2XL) 3XL (4XL)**

**Fits chest circumference**

82 (90) 98 (106) 116 (126) 136 (146) cm

**Circumference (A)**

86 (94) 102 (110) 120 (130) 140 (150) cm

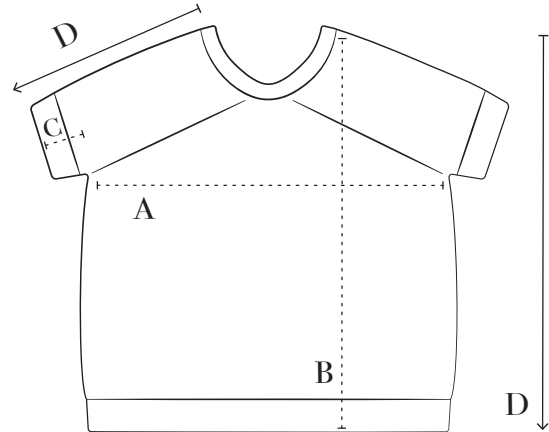
**Length (B)**

50 (50) 51 (51) 52 (52) 54 (54) cm

**Sleeve length (C)**

7 (7) 7 (7) 8 (8) 8 (8) cm.

**Knitting direction (D)**



---

## Materials

---

**YARN FROM FILCOLANA**

**Tilia colour 278 (Delicate Orchid)**

50 (75) 75 (100) 100 (125) 125 (125) g

**NEEDLES**

Circular needles 3, 3.5 and 4.5 mm, 80 cm  
Doublepointed needles 3.5 and 4.5 mm (ommit if working magic loop on longer circular needle)

**OTHER**

6 Stitch markers, must be different from one another  
2 Stitch holders

Scrap yarn for Italian cast on

---

## Gauge

---

21 sts and 26 rows worked in stockinette on 4.5 mm needle = 10 x 10 cm.

Gauge is measured after washing.

Needle sizes are for guidance only.

If you have more stitches on 10 cm, change to a larger needle. If you have fewer stitches on 10 cm, change to smaller needles.



---

# Technique

---

## ABBREVIATIONS

**k:** knit

**p:** purl

**st(s):** stitch(es)

**yo:** yarn over

**RS:** right side

**WS:** wrong side

**tog:** together

**tbl:** through the back loop of stitch

**M1, M2, M3, M4, M5, M6**

Marker 1, Marker 2, etc.

### **M1L (Left slanted increase)**

From the front, lift the horizontal strand between stitches with the left needle and knit through the back loop (1 st increase).

### **M1R (Right slanted increase)**

From the back, lift the horizontal strand between the two stitches with the left needle and knit through the front loop (1 st increase).

### **ssk**

Slip 2 sts knitwise one after the other, slip sts back to left hand needle and work them k2tbl

## SPECIAL TECHNIQUES

### **Backward loop cast on**

Form a loop with the yarn, so the end attached to the skein of yarn is in front of the end attached to the sts on the needle, insert the right needle through the front of the loop and pull tight so the loop becomes a stitch around the needle.

Repeat until you have the desired number of stitches.



---

# Workflow

---

Spring Veneer is worked top down, in the round. When working the yoke, increases are made on each side of the marked sleeve stitches.

The work is then divided for the body and sleeves, and each section is completed separately.

On the front, waist shaping is worked according to the charts, and the body is finished with a ribbed edge and an Italian bind-off.

The sleeves are worked in the same way according to the chart and finished like the body, with a ribbed edge and Italian bind-off.

---

# Chart

---

Please find the charts on the last pages of the pattern

The charts are all read from the bottom and up, from right to left on all rounds.





---

# Pattern

---

## NECKBAND

Using scrap yarn and a 3 mm circular needle, cast on 61 (61) 66 (66) 72 (72) 72 (72) sts.

Knit 2 rows back and forth.  
Break the scrap yarn.

Join Tilia to the work and purl 1 row. Do not turn work but join to a round.

Purl 2 rounds.

**Next round:** \*P1, insert right hand needle under the lowest bar worked in Tilia 3 rows down (= 1st row of Tilia), pull the yarn through as a knit st\*, repeat from \* to \*, until 1 st left, slip last bar to left hand needle and work it k2tog with the last st = 120 (120) 130 (130) 142 (142) 142 (142) sts.

## Size XS and S only

Slip first st to left hand needle without knitting it. Insert M1 to mark the beginning of the round.  
Work 10 rounds of rib (k1, p1).

## Size M, L, XL, 2XL, 3XL and 4XL only

Insert M1 to mark the beginning of the round.  
Work 10 rounds of rib (p1, k1).

## All sizes

Carefully remove the scrap yarn used for Italian cast on.

Change to 4.5 mm needle.

## YOKE

**Next row:** K57 (57) 62 (62) 68 (68) 68 (68) (right sleeve), insert M2, k3 (front), insert M3, k57 (57) 62 (62) 68 (68) 68 (68) (left sleeve), insert M4, k3 (back).

## Size L only

**Next round:** K6, \*M1L, k12\*, work from \* to \* 3 times in total, M1L, k13, M1L, k7, slip M2 to right hand needle, k3, slip M3 to right hand needle, k6, \*M1L, k12\*, work from \* to \* 3 times in total, M1L, k13, M1L, k7, slip M4 to right hand needle, k3.

## Size XL only

**Next round:** K8, \*M1L, k17\*, work from \* to \* 3 times in total, M1L, k9, slip M2 to right hand needle, k3, slip M3 to right hand needle, k8, work from \* to \* 3 times in total, M1L, k9, slip M4 to right hand needle, k3.

## Size 2XL only

**Next round:** K5, \*M1L, k7\*, work from \* to \* 7 times in total, M1L, k8, M1L, k6, slip M2 to right hand needle, k3, slip M3 to right hand needle, k5, work from \* to \* 7 times in total, M1L, k8, M1L, k6, slip M4 to right hand needle, k3.

## Size 3XL only

**Next round:** K7, \*M1L, k4\*, work from \* to \* 12 times in total, M1L, k6, M1L, k7, slip M2 to right hand needle, k3, slip M3 to right hand needle, k7, work from \* to \* 12 times in total, M1L, k6, M1L, k7, slip M4 to right hand needle, k3.

## Size 4XL only

**Next round:** K2, \*M1L, k3\*, work from \* to \* 21 times in total, M1L, k3, slip M2 to right hand needle, k3, slip M3 to right hand needle, k2, work from \* to \* 21 times in total, M1L, k3, slip M4 to right hand needle, k3.





### All sizes

Now there are 120 (120) 130 (140) 150 (160) 170 (186) sts on the needle.

The sleeve sts are now to be worked according to chart A.

Begin the first/right sleeve on 1st round of chart, and begin the second/left sleeve on 29th round of chart, **AT THE SAME TIME** work increases for front and back on all rounds, as follows:

### Size XS and S only

**Next round:** Slip M1, work according to 1st round of chart A 3 times in total, slip M2, M1L, knit to M3, M1R, work according to 29th round of chart A, 3 times in total, slip M4, M1L, knit to M1, M1R.

### Size M, L and XL only

**Next round:** Slip M1, k1 (3) 4, work according to 1st round of chart A, k2 (2) 3, work according to 1st round of chart A, k1 (2) 4, work according to 1st round of chart A, k1 (3) 4, slip M2, M1L, knit to M3, M1R, slip M3, k1 (3) 4, work according to 29th round of chart A, k2 (2) 3, work according to 29th round of chart A, k1 (2) 4, work according to 29th round of chart A, k1 (3) 4, slip M4, M1L, knit to M1, M1R.

### Size 2XL, 3XL and 4XL only

**Next round:** Slip M1, k(0) 2 (2), work according to 1st round of chart A, k(0) 1 (3), work according to 1st round of chart A, k(1) 1 (3), work according to

1st round of chart A, k(0) 1 (3), work according to 1st round of chart A, k(0) 1 (3), slip M2, M1L, knit to M3, M1R, slip M3, k(0) 2 (2), work according to 29th round of chart A, k(0) 1 (3), work according to 29th round of chart A, k(1) 1 (3), work according to 29th round of chart A, k(0) 1 (3), work according to 29th round of chart A, k(0) 1 (3), slip M4, M1L, knit to M1, M1R.

### All sizes

Continue as established from 2nd round of chart on right sleeve and from 30th round of chart on left sleeve, repeating chart A, **AT THE SAME TIME** work increases on all rounds to a total of 42 (46) 49 (53) 58 (63) 68 (73) rounds have been worked = 288 (304) 326 (352) 382 (412) 442 (478) sts.

The last round is chart round 42 (46) 49 (53) 2 (7) 12 (17) round for right sleeve and chart row 14 (18) 21 (25) 30 (35) 40 (45) for left sleeve.

Now divide round into body and sleeves, as follows:

Slip M1, \*slip the next 57 (57) 62 (67) 72 (77) 82 (90) sleeve sts to a stitch holder, cast on 5 (6) 6 (7) 7 (8) 8 (9) new sts using the backward loop cast on technique\*, slip M2, knit to M3, slip M3, repeat from \* to \* once, remove M4, knit to M1.

Now there are 184 (202) 214 (232) 252 (274) 294 (316) sts on the body.





## BODY

Work stockinette in the round to work measures 12 (12) 12 (12) 12 (11) 11 (10) cm, from the new sts at the armhole.

On following round 2 additional stitch markers are inserted, to mark up the sts for chart B and C, as follows:

**Next round:** Slip M1, knit to M2, slip M2, k18, insert M5, knit to last 18 sts before M3, insert M6, knit to M3, slip M3, knit to M1.

The detail on the front of Spring Veneer is made from decreases and increases, these are worked according to charts B and C, as follows:

**Next round:** Slip M1, knit to M2, slip M2, work according to 1st round of chart B to M5, slip M5, knit to M6, slip M6, work according to 1st round of chart C to M3, slip M3, knit to M1.

Repeat this round until all rounds of both charts have been worked.

The total number of stitches decreased is 8.

Work 7 cm of stockinette.

Change to 3.5 mm needle and knit 1 round.

## Rib

Work 14 rounds of rib (k1, p1).

Bind off in rib, not to firm, on the next round.

## RIGHT SLEEVE

Using 4.5 mm needle and RS facing, pick up and knit 5 (6) 6 (7) 7 (8) 8 (9) sts along the new sts on the body, insert a marker, work the sleeve sts according to round 43 (47) 50 (54) 3 (7) 13 (18) of chart A, insert a marker and join to a round.

There are now 62 (63) 68 (74) 79 (85) 90 (99) sts on the sleeve.

Continue as established according to chart A, knit the new sts between the markers on all rounds, until sleeve measures 4 (4) 4 (4) 5 (5) 5 (5) cm, last row worked must be an even round.

Change to 3.5 mm needle and knit 1 round.

## Rib

Work 9 rounds of rib (k1, p1).

Bind off using Italian bind off, as follows:

Break the yarn with a length that is about 3 times the circumference of the ribbing edge, and thread the darning needle.

**1.** Insert the needle into the 1st st on the left needle purl-wise and pull the yarn through.

**2.** Insert the needle between the 1st and 2nd st from back to front.

**3.** Insert the needle through the 2nd st from front to back.

**4.** Insert the needle into the 1st st knit-wise and slip off the needle.

**5.** From the front, insert the needle from right to left into the front leg of the 2nd st, pull the yarn through.

**6.** Insert the needle into the 1st st purl-wise and slip off the needle.

Repeat points 2-6 until there is 1 (purl) st left on the left needle.

## Finishing:

**7.** From the front, insert the needle from right to left through the first bound off st, pull the yarn through.

**8.** As point 6.

Weave the ends in thoroughly.

## LEFT SLEEVE

Using 4.5 mm needle and RS facing, pick up and knit 5 (6) 6 (7) 7 (8) 8 (9) sts along the new sts on the body, insert a marker, work the sleeve sts according to round 15 (19) 22 (26) 31 (36) 41 (46) round of chart A, insert a marker and join to a round.

There are now 62 (63) 68 (74) 79 (85) 90 (99) sts on the sleeve.

Finish this sleeve as the right sleeve.

## FINISHING

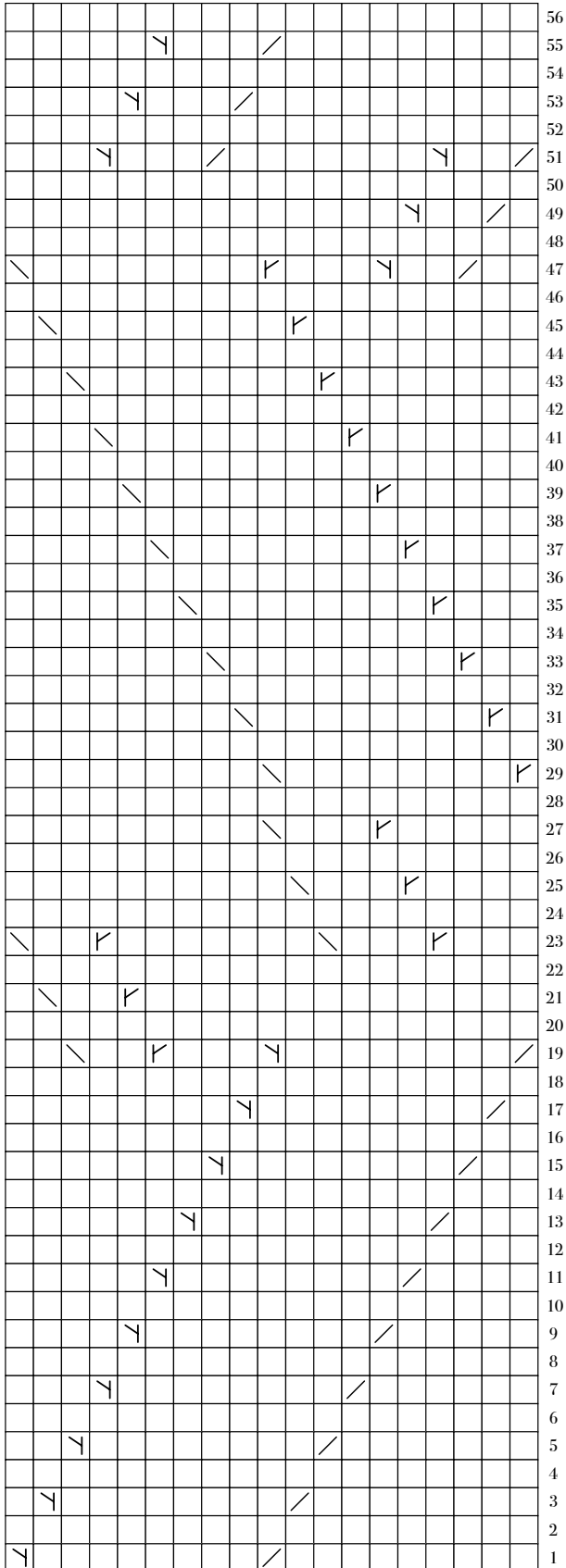
Weave in all ends.


Wash the blouse according to instructions on the ball band and leave to dry flat on a towel.



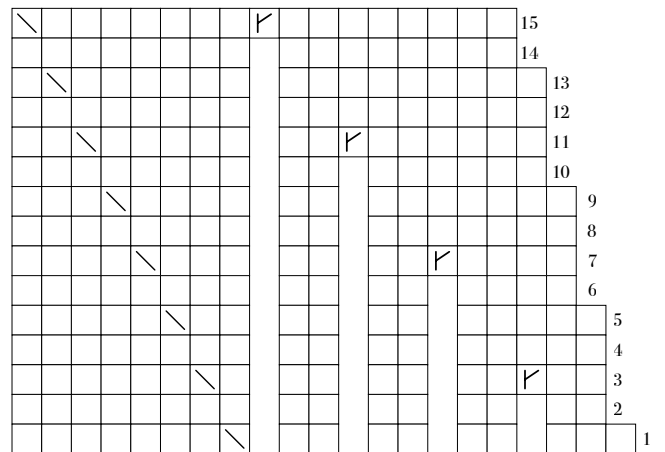
# Charts

### CHART A



-  Knit
-  SSK
-  K2tog
-  M1R
-  M1L

### CHART B



### CHART C

