

# filcolana

OBSESSED WITH QUALITY YARN SINCE 1952



## Urania

Design: Karen S. Lauger // Lykkefanten

**Sophie Brahe is considered the first female Danish researcher and also one of the first female Danish authors.**

**Sophie Brahe was Tycho Brahe's younger sister and shared his keen interest in astronomy, and she helped her brother with astronomical observations.**

**Sophie often went to Uranienborg in Hven, where her brother took her seriously and invited her to contribute to the scientific environment, where she went by the name Urania, after the muse of astronomy.**

**When looking at portraits of Sophie Brahe, the most striking thing is the finely laced ruff, the beautiful laced cuffs, and head accessories that were part of the fashion of Renaissance nobility.**

**The Urania shawl lets the light shine through a fine, almost lacy, eyelet pattern like the stars Sophie loved to study.**



---

# Sizes & Measurements

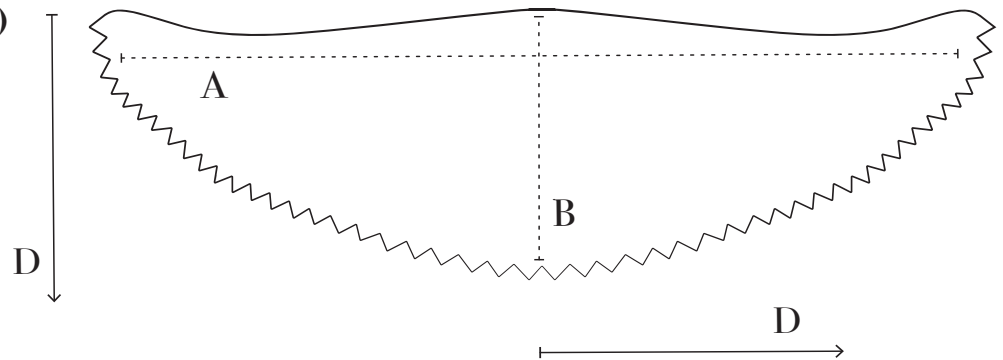
---

## ONE SIZE

**Width along the upper edge (A)**  
210 cm

**Depth (B)**  
65 cm

**Knitting direction (D)**



---

## Materials

---

### YARN FROM FILCOLANA

**Color A**  
Saga col. 977 (Marzipan)  
100 g

**Color B**  
Saga col. 978 (Oatmeal)  
50 g

**NEEDLES**  
4 mm circular needles, 80 cm

---

## Gauge

---

17 stitches and 27 rows in the pattern according to chart A, worked on 4 mm needles = 10 x 10 cm.  
This corresponds to a pattern repeat measuring 6 cm in width and 4 cm in height.  
The gauge is measured after washing and blocking.

The needle size is a guide.  
If you have more stitches per 10 cm, change to bigger needles. If you have fewer stitches per 10 cm, change to smaller needles. If you meet the width but not the height, it can help to change needle material, for example from metal to wood, or vice versa.



---

# Technique

---

## ABBREVIATIONS

**k:** knit

**p:** purl

**RS:** right side

**sl1pw:** slip 1 stitch purl-wise with yarn in front

**st(s):** stitch(es)

**tbl:** through the back loop

**tog:** together

**WS:** wrong side



---

# Workflow

---

The shawl is worked from the middle of the neck and out towards the edge.

The pattern alternates between the eyelet pattern according to the chart and short “between pieces”, according to the description.

Finally, the shawl is bound off by knitting an eyelet pattern edge sideways. The edge is also worked according to the chart.

---

# Charts

---

Charts are found at the end of the pattern.

The chart is read from the bottom to the top, from right to left on the RS and from left to right on the WS.

**Chart A:** The chart begins with a WS row.

**Chart B:** The chart begins with a RS row.





---

# Pattern

---

## SHAWL

Cast 7 sts onto 4 mm needles with col. A.

**1st row (WS):** Knit the entire row.

**2nd row:** sl1pw, \*yarn over, k1\*, repeat from \* to \* the whole row.

There are now 13 sts on the needle.

**3rd row:** sl1pw, knit the entire row (knit through the back loop of the yarn over from the previous row).

**4th row:** sl1pw, yarn over, knit the sts until 1 st remains, yarn over, k1.

**5th row:** sl1pw, knit the entire row.

**6th row:** sl1pw, \*yarn over, k1\*, repeat from \* to \* the entire row.

There are now 29 sts on the needle.

**7th row:** sl1pw, knit the entire row (knit through the back loop of the yarn over from the previous row).

**8th row:** sl1pw, yarn over, knit until 1 st remains, yarn over, k1.

**9th row:** sl1pw, knit the entire row.

Change to col. B.

**Next row (RS):** k1, yarn over, knit until 1 st remains, yarn over, k1.

Now the eyelet pattern is worked according to chart A, as follows:

**1st row (WS):** sl1pw, work the pattern according to chart A until 1 st remains, k1.

**2nd row:** sl1pw, yarn over, work the pattern according to chart A until 1 st remains, yarn over, k1.

Repeat rows 1-2 until all 11 rows in chart A are worked. The last row is a WS. There are now 43 sts on the needle.

##

Change to col. A.

Now work the middle part in col. A, as follows:

**1st row (RS):** k1, yarn over, work [k3, yarn over] 4 times, work until 13 sts remain, [yarn over, k3] 4 times, yarn over, k1.

**2nd row:** sl1pw, knit the entire row (knit through the back loop of the yarn over from the previous row).

**3rd row:** sl1pw, yarn over, knit until 1 st remains, yarn over, k1.







**4th row:** sl1pw, p1, \*yarn over, p2tog\*, repeat from \* to \* until 1 st remains, k1.

**5th row:** sl1pw, [yarn over, k3] 8 times, knit until 25 sts remain, work [k3, yarn over] 8 times, k1.

**6th row:** sl1pw, knit the entire row (knit through the back loop of the yarn over from the previous row).

Change to col. B.

**Next row (RS):** k1, yarn over, knit until 1 st remains, yarn over, k1.

Now work the eyelet pattern again according to chart A, as follows:

**1st row (WS):** sl1pw, work the pattern according to chart A until 1 st remains, k1.

**2nd row:** sl1pw, yarn over, work the pattern according to chart A until 1 st remains, yarn over, k1.

Repeat rows 1-2 until all 11 rows in Chart A are worked. The last row is a WS.

##

Work like this from ## to ## alternating between eyelet patterns in col. B and the middle piece in col. A, until a total of 8 rows of the eyelet pattern in col. B have been worked. Finish with a WS row.

There are now 323 sts on the needle.

Now work the ridges with colors A and B as follows:

Change to col. A.

**1st row (RS):** k1, yarn over, work [k3, yarn over] 4 times, knit until 13 sts remain, work [yarn over, k3] 4 times, yarn over, k1.

**2nd row:** sl1pw, knit the rest of the row (knit through the back loop of the yarn over from the previous row).

**3rd row:** sl1pw, yarn over, knit until 1 st remains, yarn over, k1.

**4th row:** sl1pw, p1, \*yarn over, p2tog\*, repeat from \* to \* until 1 st remains, k1.

**5th row:** sl1pw, work [yarn over, k3] 8 times, knit until 25 sts remain, work [k3, yarn over] 8 times, k1.

**6th row:** sl1pw, knit the rest of the row (knit through the back loop of the yarn over from the previous row).

Change to col. B.

**7th row:** sl1pw, yarn over, knit until 1 st remains, yarn over, k1.

**8th row:** sl1pw, p1, \*yarn over, p2tog\*, repeat from \* to \* until 1 st remains, k1.

Work these 8 rows 2 times in total.

There are now 383 sts on the needle.





Work the last ridge with col. A as follows:

**1st row (RS):** k1, yarn over, work [k3, yarn over] 4 times, knit until 13 sts remain, work [yarn over, k3] 4 times, yarn over, k1.

**2nd row:** sl1pw, knit the rest of the row (knit through the back loop of the yarn overs from the previous row).

**3rd row:** sl1pw, yarn over, knit until 1 st remains, yarn over, k1.

**4th row:** sl1pw, p1, \*yarn over, p2tog\*, repeat from \* to \* until 1 st remains, k1.

**5th row:** sl1pw, work [yarn over, k3] 3 times, knit until 10 sts remain, work [k3, yarn over] 3 times, k1.

**6th row:** sl1pw, knit the rest of the row (knit through the back loop of the yarn overs from the previous row).

There are now 401 sts on the needle.

### EDGE

Break the yarn and push the sts down to the opposite end of the needle, so that you again can work from the WS.

Cast on 15 sts with col. A using long tail cast on, in extension of the sts on the needle.

**Setting-up row (WS):** sl1pw, purl until 1 st remains, k2togtbl, (the last st from the edge is knit together with the first st on the shawl itself), turn the work.

Now work the edge according to chart B, perpendicular to the shawl. The sts of the shawl are knitted together with the edge sts on the WS. When all the shawl sts have been knitted together with the edge sts, bind off the sts on the last row.

### FINISHING

Weave in all ends.

Wash the shawl according to instructions on the label. Stretch the shawl out so that the upper edge becomes straight and place a pin in the edge points so that the pattern opens.

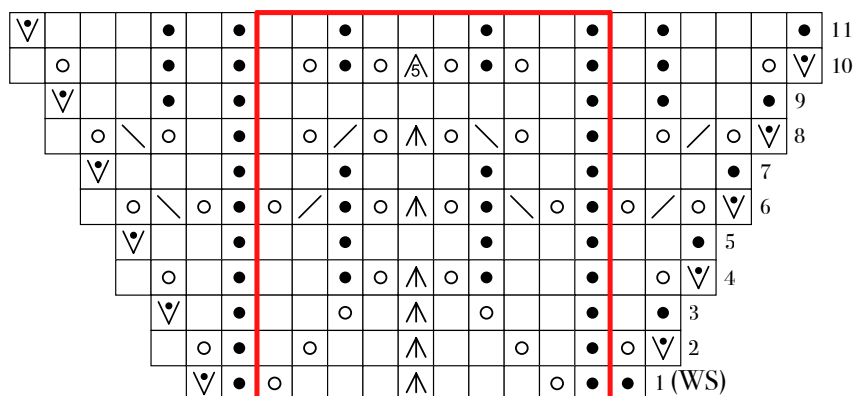
Let the shawl to dry entirely before removing the pins.



# Charts

- Knit on the RS, purl on the WS
- Purl on the RS, knit on the WS
- Right side:** Slip 2 stitches off knit-wise one at a time, put the stitches back onto the left needle and knit them together through the back loop  
**Wrong side:** knit 2 stitches together purl-wise through the back loop
- Right side:** Knit 2 stitches together  
**Wrong side:** Purl 2 stitches together
- Knit 2 stitches together through the back loop
- Right side:** Slip 2 stitches off knit-wise as if to knit together, knit 1 stitch, pull the slipped stitches over  
**Wrong side:** Slip 2 stitches off the needle purl-wise as if to purl together, purl 1 stitch, pull the slipped stitches over
- Yarn over
- Slip 1 stitch purl-wise with yarn in front of the work
- Slip 3 stitches knit-wise as if to knit together, knit 2 stitches together, pull the slippe stitches over
- Repeat

## CHART A



## CHART B

