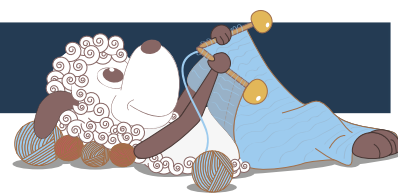


Pyt & Tyt - a pair of sweet Christmas elves



Design: Hanne Pjedsted

Two charming, floppy Christmas elf dolls that can be used for decoration as well as for play. They can hang, lie or sit because of the knots on the legs and the floppy joints. A lovely little knit. The elves are stuffed with thin, worn-out cotton fabric, so the alfs can be machine washed.

1st English edition - November, 2014 © Filcolana A/S
English translation: Signe Strømgaard

Materials (for 2 dolls)

Arwetta Classic by Filcolana, approx. 25 g in each of the following colors: grey (954), dark red (140), pink (226) and a scrap of beige (971 - for face and hands)
3 mm needles
Stuffing: Cotton fabric scraps from e.g. a tea towel or an old pillow case and some yarn scraps

Measurements

Total length: approx. 43 cm

Gauge

26 sts in stockinette stitch on 3 mm needles = 10 cm wide (row gauge is not important here)

Directions for knitting

The elves are worked back and forth in pieces, that are then knitted and sewn together. When finishing, the pieces of knitting are sewn together around the stuffing.

The 2 elves are almost identical. The difference lies in the stripes and the larger nose - the numbers for these are in brackets.

Christmas Elves

Leg

Cast on 16 sts with dark red and work 26 rows of stockinette stitch.

Continue in stripes: Alternate 2 rows of grey and 2 rows of pink until there is a total of 32 stripes (= approx. 16 cm).



Let the first leg rest and knit the second leg in the same way.

Body

Join the two legs using grey (or pink), start by casting on 2 new sts. Work across the sts of the first leg, cast 3 new sts between the leg, then work across the sts of the second leg. End row by casting on 2 new sts (= 39 sts on the needle).

Work straight in stockinette stitch for 15 rows. Then work the following decreases: K1, k2tog, k14, k2tog, k1, k2tog through the back loops (tbl), k14, k2tog tbl, k1 (= 35 sts on the needle).

Work straight in stockinette stitch for 13 rows. Then work the following decreases: K1, k2tog, 12 r, k2tog, k1, k2tog tbl, k12, k2tog tbl, k1 (= 31 sts on the needle).

Work straight in stockinette stitch for 11 rows. Then work the following decreases: K1, k2tog, k10, k2tog, k1, k2tog tbl, k10, k2tog tbl, k1 (= 27 sts on the needle).

Work straight in stockinette stitch for 3 rows. Then work the following decreases: K1, k2tog, k8, k2tog, k1, k2tog tbl, k8, k2tog tbl, k1 (= 23 sts on the needle).

Work straight in stockinette stitch for 4 rows and change to beige for the face.

Face

Work straight in stockinette stitch for 6 rows. Work to the center stitch on the 7th row and work a bobble for the nose: Knit 4 (5) times into the same stitch (by working alternately into the back and front of the stitch). Turn and work 3 rows of stockinette stitch across these 4 (5) sts. Turn and knit them into 1 stitch again: Slip 1 (2) st(s), k3tog, pass slipped st(s) over, continue in stockinette to end of row. Work another 2 rows of stockinette stitch, then bind off 3 sts at the beginning of the next 6 rows. Bind off all remaining sts.

Hat

Pick up and knit 1 stitch in each of these bound off sts from the RS using dark red. Work straight in reverse stockinette stitch (= purl on the RS, knit on the WS) for 10 rows. The work decreases for the tip of the hat on the side with knit sts: *K4, k2tog*. Repeat from * to * to end of row. Work 3 rows in reverse stockinette stitch.

Next row with knit sts: *K3, k2tog*. Repeat from * to * to end of row.

Work a decrease row every 4th row, but with 1 stitch fewer between the decreases for each repeat until all sts are worked as k2tog. Break the yarn and pull through the last remaining sts on the needle.

Arms

Cast on 11 sts using beige and work straight stockinette stitch for 20 rows (= hand). Continue in stripes (the same as for the legs or with dark red and pink) while working straight in stockinette stitch for a total of 16 stripes. Bind off.

Pocket

Cast on 9 sts with dark red and work straight in stockinette stitch for 10 rows. Bind off.

Scarf

Cast on 8 sts with dark red or pink and work in garter stitch for approx. 28 cm. Bind off.

Finishing

Weave in all ends. Start by sewing up the feet and hands. Knot them and pull tight, making sure the knot is placed in the beige (hands) and dark red (feet) sections.

Cut square pieces of the cotton fabric that are the

same length at the sleeves and legs of the elf. Roll the fabric up and place it inside the knitted pieces before sewing these together from the RS. Make sure only to sew the knitted pieces together (being careful not to catch the cotton fabric in the seams).

Roll up another piece of fabric for the body of the elf, this piece needs to be the shape of a triangle, so the body is widest at the bottom and thinner at the top. Leaving space between the pieces of stuffing makes the doll a bit floppy. Roll up a scrap of fabric for the head and stuff it out with the scraps of yarn as well, to create the rounded shape for the head.

Use a long triangle of fabric for the hat and sew all the seams of the elf from the RS.

If the knitting of the bobble nose has left a bit of a hole, this can be sewn up with a few stitches in the beige yarn. The arms are sewn onto the body where the 3rd round of decreases before the head were made. Sew the pocket onto the one of the elves. Tie a belt of 3-4 scraps of yarn around the other elf quite high up on the body to create a "girl shape". Sew the belt to the body.

Tie the scarves around the neck of the elves. The can be sewn down as well, if you wish.

