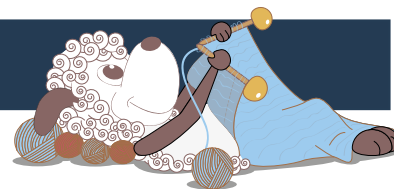


Dicentra - a baby blanket with little hearts



Design: Rachel Søgaard

A charming baby blanket or square shawl with little hearts, worked like a traditional Shetland shawl.

3rd English edition - August 2015 © Filcolana A/S
English translation: Signe Strømgaard

Materials

approx. 300 g of Anina by Filcolana.
A length of cotton yarn - approx. 1 meter long.
3,5 circular needle, preferably 80 cm long or longer.

Measurements

100 x 100 cm

Gauge

26 st and 36 rows in stockinette stitch on 3,5 mm needles = 10 x 10 cm
26 sts and 36 p in chart A lace pattern on 3,5 mm needles = 10 x 10 cm

Techniques

Provisional cast-on (see illustration on page 2):

Form a loop with the working yarn and place it on the needle. Hold the provisional yarn close under the needle and create loops of the working yarn around the needle by moving it under the provisional yarn first to one side of it and then the other, alternately. Leave the provisional yarn in the stitches until later, when you need them.

Directions for knitting

Dicentra is worked in 2 parts like a traditional Shetland shawl.

First the center square is knit and then the border.



Baby Blanket

Cast on 151 sts using a provisional cast-on.
Work 2 rows in stockinette stitch, then work chart A A.
Work a total of 180 rows or 15 pattern repeats. Then work 2 rows in stockinette stitch.

Border

Knit 1 row from the RS across the 151 sts on the needle, continue around "the corner" by picking up and knitting 153 sts along the side of the square, open the provisional cast-on and knit across the 151 sts of the cast-on, then pick up and knit 153 sts along the other side of the square. Mark the first and last of the 153 sts on each side as the corner stitches (use removable stitch markers or loops of scrap yarn).
Work in the round and work yarn over increases on both sides of each of the four corner stitches every other row throughout the work:

Round 1: Knit all sts and work a yarn over on both sides of each of the corner stitches.

Round 2: Purl all sts.

Round 3: Work as round 1.

Round 4: Work as round 2.

Round 5: Work as round 1.

Round 6: Knit all sts.

There are now a total of 157 sts on each of the 4 sides – not counting the corner stitches.
Work chart B.

Bind off loosely.

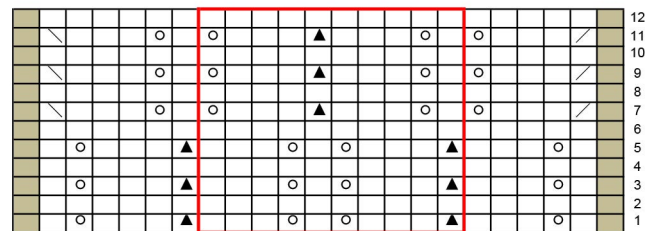
Finishing

Crochet a picot edge around the shawl (UK terms):
1 dc, ch 3, sc in the first of the 3 ch, miss 1 st, dc in the next st.

Do not miss 1 stitch at the corners of the blanket.

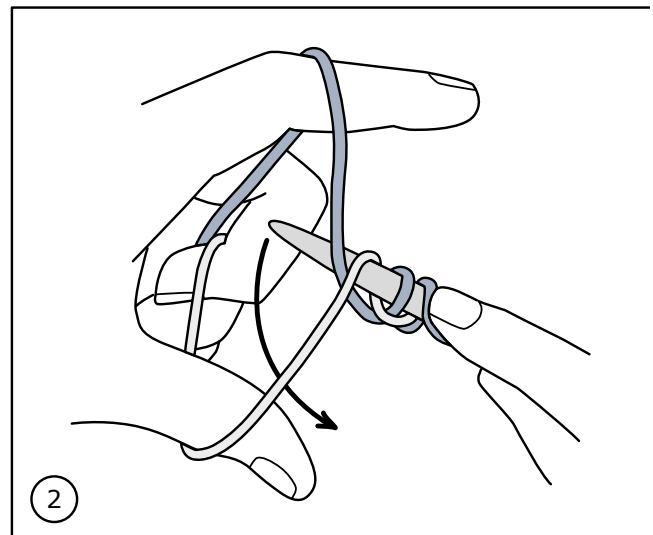
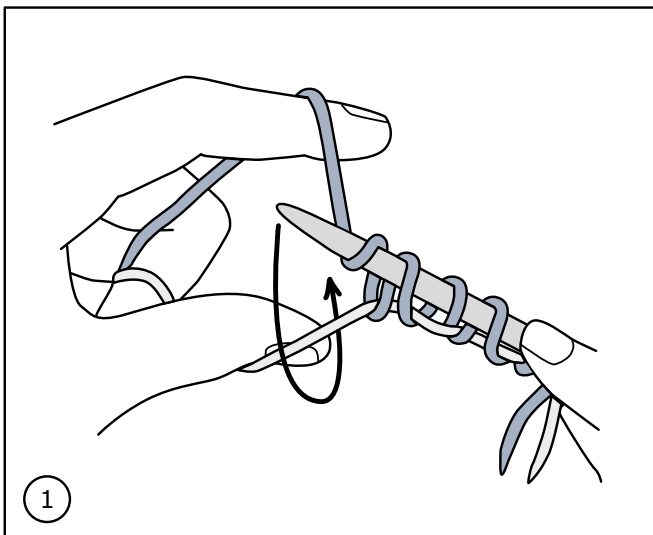
Gently rinse the finished work and block it with a needle at each tip.

Chart A



- knit on the RS, purl on the WS
- purl on the RS, knit on the WS
- yarn over
- k2tog
- slip 1 stitch, knit the next stitch, pass the slipped stitch over the knit one
- slip 1 stitch, k2tog, pass the slipped stitch over the knitted together ones
- pattern repeat

Provisional cast-on



Form a loop with the working yarn and place it on the needle. Hold the provisional yarn close under the needle and create loops of the working yarn around the needle by moving it under the provisional yarn first to one side of it and then the other, alternately. Leave the provisional yarn in the stitches until later, when you need them.

Chart B

