

filcolana

OBSESSED WITH QUALITY YARN SINCE 1952



Design: Katja Dyrberg

Sea of Love

5th edition - October 2022 © filcolana

English translation: June Thomsen

Sea of Love is a classic fine and feminine cardigan with a short fit. The beautiful rib pattern embraces you like a sea of love.

SIZES

XS (S) M (L) XL (2XL) 3XL

MEASUREMENTS

Fits chest sizes: 80-87 (88-93) 94-99 (100-107)

108-116 (117-126) 127-136 cm

Chest circumf: 95 (101) 107 (113) 125 (137) 149 cm

Length (measured from the top of back neckline):

44 (45) 46 (48) 50 (52) 54 cm

Sleeve length: 50 (49) 49 (48) 46 (45) 44 cm

GAUGE

20 sts and 34 rows in pattern on 4 mm needles

= 10 x 10 cm

24 sts and 30 rows of rib on 3.5 mm needles

= 10 x 10 cm

Measurements are after wash and blocking.

MATERIALS

Yarn from Filcolana

200 (200) 200 (250) 250 (300) 300 g **Saga**
colour 121 (Port)

125 (150) 150 (175) 175 (200) 225 g **Tilia**
colour 360 (Azalea)

The two yarns are held together throughout work.

Circular needles 3.5 and 4 mm, 80-120 cm.

Doublepointed needles 3.5 and 4 mm, unless you use magic loop technique on a long circular needle.

Stitch markers.

Waste yarn for Italian cast on.

5 buttons.



Technicals

SPECIAL ABBREVIATIONS

3-in-1

3 sts in the same st. K1, ktbl, k1 in same st.

Ssk

Slip 1 st, slip 1 st, knit the 2 sts together through back loop.

K2tog

Knit 2 sts together.

sl1 wyif

Slip one st purlwise with yarn in front.

SPECIAL TECHNIQUES

German short rows

Slip st purlwise with yarn in front, tug yarn up and over right needle and pull yarn backwards, first stitch will create a double loop. Work pattern as advised. When working the double stitch, knit or purl through both loops as in one stitch.

This technique is called German Short Rows.

Workflow

Sea of Love Cardigan is knit bottom up and in one piece until the armholes.

Sleeves are knit separately and then joined with body and raglan decreases begin.

Decreases continue to the neckline.

Next, the neckline is knit, and as a final touch stitches for the button bands are picked up and knitted.

CHART

See page 7.





PATTERN

BODY

With 3.5 mm and waste yarn cast on 97 (103) 109 (115) 127 (139) 151 sts.

Knit 2 rows and break waste yarn.

Now use Saga and Tilia held together and knit 3 rows of stockinette (right on right side, purl on wrong side).

Next row (RS): p1, insert right needle under the lower bar knit with the main colour 3 rows down (between last st on right needle and first st on left needle), pick up the bar and place it on LH needle, purl the new st and the next st together, *insert RH needle under the bar and knit a new st, p1*, repeat from * to * to last 2 sts, knit 1 st under the bar, slip next st, insert RH needle under the lower bar and place it on LH needle, place slipped st onto LH needle and purl this st together with the new st, p1 = 191 (203) 215 (227) 251 (275) 299 sts.

Continue ribbing and knit back and forth like this:

1st row (RS): k2, *p1, k1*, repeat from * to * to last st, k1.

2nd row: p2, *k1, p1*, repeat from * to * to last st, p1.

Repeat those 2 rows until rib measures 10 cm. Last row is a wrong side row.

Change to 4 mm needles and divide work into sections like this:

1st row (RS): k1 (edge st), *k3, p1, k1, p1*, repeat from * to * until the last 4 sts, k3, k1 (edge st).

2nd row: k1 (edge st), *p3, k1, p1, k1*, repeat from * to * until the last 4 sts, p3, k1 (edge st).

Repeat those 2 rows once more.

Now follow chart until work measures 25 cm or has the desired length. Finish with a row identical with 3rd row in chart.

Next row (WS): Bind off for armholes like this:
K1 (edge st), follow chart over 44 (47) 50 (53) 59 (65)

71 sts, bind off the next 5 sts, follow chart over 91 (97) 103 (109) 121 (133) 145 sts, bind off the next 5 sts, follow chart for 44 (47) 50 (53) 59 (65) 71 sts, k1 (edge st).

Break yarn.

Leave sts to rest on a stitch holder while knitting the sleeves.



SLEEVES

With 3.5 mm needle and waste yarn cast on 23 (23) 23 (25) 25 (27) 27 sts.

Knit 2 rows. Break the yarn.

Purl 1 row with 1 strand of Saga and 1 strand of Tilia held together. Do not turn work, but join in the round.

Purl 2 rounds.

Next round: *P1, insert the right needle under the the strand of yarn running between the sts 3 rows below

the row on the needles (ie. the first row worked in Saga and Tilia), lift the strand onto the left needle and knit it *, repeat from * to * until there are 1 stitch left, pick up and knit the last strand of yarn running between the sts and knit it together with the last stitch. There are now 44 (44) 44 (48) 48 (52) 52 sts on the needle.

P1, place a marker for the beginning of the round and work 10 cm of k1, p1 ribbing. Carefully cut and remove the cast-on scrap yarn.

Next row: Knit *3-in-1, p1, k1, p1*, repeat from * to * over entire row = 66 (66) 66 (72) 72 (78) 78 sts.

Change to 4 mm needles.

Next row: Knit *k3, p1, k1, p1*, repeat from * to * over entire row.
Repeat this row twice more.

Knit pattern according to chart, until work measures



50 (49) 49 (48) 46 (45) 44 cm or has the desired length. Finish with a row identical with row 3 in chart.

Next row: Follow chart to last 4 (1) 4 (1) 1 (1) 1 st(s) before beginning of round, bind off 5 sts = 61 (61) 61 (67) 67 (73) 73 sts.

Place sts on a stitch holder and leave for now.

Knit second sleeve the same way.

YOKE

Now body and sleeves are joined on the same needle, and raglan decreases are knit as follows: Place the body sts back on 4 mm needles and knit from the right side.

Next row (RS): K1 (edge st), follow 1st row in chart over the right front piece sts, knit to 2 sts before the bound off sts, k2tog, place marker, knit right sleeve sts onto needle like this: ssk, follow chart to last 2 sts, k2tog, place marker, knit the back sts like this: ssk, follow chart to the last 2 sts before the bound off sts, k2tog, place marker, knit left sleeve sts onto needle like this: ssk, follow chart to last 2 sts, k2tog, place marker, knit left front piece like this: ssk, follow chart to last st, k1 (edge st) = 303 (315) 327 (351) 375 (411) 435 sts.

4 stitch markers have now been placed and they mark the raglan. On all following right side rows knit decreases on each side of the 4 markers like this: k2tog, sm, ssk.

It is not possible to follow chart over the decrease sts, so they are simply knitted.

On all the consecutive wrong sides knit: k1 (edge st), knit as pattern indicates k1 (edge st).

Continue knitting flat as described, until you have made a total of 40 (40) 44 (48) 52 (56) 60 rows and decreased 20 (20) 22 (24) 26 (28) 30 times = 143 (147) 151 (159) 167 (187) 195 sts.

Now it's time for German short rows (GSR) to shape the neckline in front. It is not possible to follow pattern according to the chart over the short rows, so they are simply knitted or purled depending on what fits the pattern.

1st row (RS): k1 (edge st), k3, p1, k1, p1, place marker A, knit according to chart and with raglan



decreases till you have 7 sts left on needles, place marker B, turn work.

2nd row: knit GSR, follow chart to marker A, turn work.

3rd row: knit GSR, follow chart and make raglan decreases to GSR on previous row, turn work.

4th row: knit GSR, follow chart and make raglan decreases to GSR on previous row, turn work.

Repeat 3rd and 4th rows 5 times more = 87 (91) 95 (111) 119 (139) 147 sts.

German short rows and raglan decreases are now done.

Next row (RS): k1 (edge st), follow chart over all sts and work the double short row sts together as k2tog or p2tog depending on what the pattern indicates.

Next row: Follow chart over all sts.

NECKLINE

Change to 3.5 mm needles.

Knit rib (k1, p1) flat, and decrease 0 (4) 4 (20) 24 (44) 48 sts evenly on 1st row. First and last st are edge sts (k1) = 87 (87) 91 (91) 95 (95) 99 sts.

Continue rib until work measures 3 cm. Last row is a wrong side row.

Knit 2 rows back and forth with double knitting before binding off with Italian bind off:

1st row (RS): k1 (edge st), *k1, sl1 wyif*, repeat from * to * to the last 2 sts, k1, k1 (edge st).

2nd row: k1 (edge st), *sl1 wyif, k1*, repeat from * to * to last 2 sts, sl1 wyif, k1 (edge st).

Bind off with Italian bind off like this:

Measure a tail at least 3 times the length to be bound off. Thread tail onto a tapestry needle.

1. Insert tapestry needle into first 2 sts on left needle as if to purl them together, pull the yarn through.

2. From behind work insert tapestry needle between 2nd and 3rd st. Pull needle and yarn to front of work.

3. Insert tapestry needle from front into 3rd st (purl st) and out on the back.

4. Insert tapestry needle into 2 first sts as if to knit, slip sts off needle.

5. From the front insert tapestry needle - from right to left - into the front leg of the 2nd st (knit st), pull yarn through.

6. Insert tapestry needle into 1st st (purl st) as if to purl, slip st off needle.

7. From behind work insert tapestry needle between 1st and 2nd st. Pull tapestry needle and yarn to front.

8. Insert tapestry needle through 2nd st from front and pull tapestry needle and yarn out on back.

9. Insert tapestry needle into 1st st as if to knit, slip st off needle.

10. Repeat step 5.

11. Repeat step 6.

Repeat steps 7-11, till you have 3 sts left on LH needle. Finish bind off like this:

Finish: From front insert tapestry needle - from right to left - into the last 2 sts as if to purl, pull yarn through.

Insert tapestry needle into 1st st as if to purl, slip st off needle.

Insert tapestry needle into the last 2 sts as if to knit them together, slip both sts off needle.

All sts are now bound off. Carefully weave in the loose end.

LEFT SIDE BUTTON BAND

With 3.5 mm needles pick up 97 (101) 105 (109) 113 (117) 121 sts (approximately 3 sts for every 4 rows) along the right side of the left front piece.

1st row (WS): sl1 wyif, *p1, k1*, repeat from * to * to last 2 sts, p1, sl1 wyif.

2nd row: k2, *p1, k1*, repeat from * to * to last st, k1.

Repeat row 1 once more.

Knit 2 rows of double knitting before binding off with Italian bind off:

1st row (RS): k1, *k1, sl1 wyif*, repeat from * to * to last 2 sts, k2.

2nd row: *sl1 wyif, k1*, repeat from * to * to last st, sl1 wyif.

Bind off with Italian bind off as on neckline.



RIGHT SIDE BUTTON BAND

With 3.5 mm needles pick up 97 (101) 105 (109) 113 (117) 121 sts (approximately 3 sts for every 4 rows) along the right side of the right front piece

1st row (WS): sl1 wyif, *p1, k1*, repeat from * to * to last 2 sts, p1, sl1 wyif.

2nd row: k1, knit rib (k1, p1) over 4 (6) 8 (6) 8 (6) 8 sts, *ssk, yo twice, knit rib (k1, p1) over 20 (20) 20 (22) 22 (24) 24 sts*, repeat from * to * 4 times in total, ssk, yo twice, knit rib (k1, p1) over remaining sts with k1 as last st.

3rd row: sl1 wyif, *p1, k1*, repeat from * to * to last 2 sts, p1, sl1 wyif.

Knit 2 rows of double knitting before binding off with Italian bind off:

1st row (RS): k1, *k1, sl1 wyif*, repeat from * to * to last 2 sts, k2.

2nd row: * sl1 wyif, k1*, repeat from * to * to last st, sl1 wyif.

Bind off with Italian bind off as on left side button band.

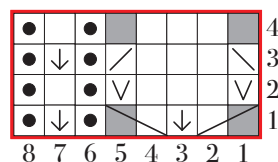
FINISHING

Weave in all loose ends and sew the holes under the armholes with Kitchener sts.

Sew in the buttons.

Wash cardigan according to washing instructions on the label, and lay it flat to dry on a towel.

CHART



Knit on RS, purl on WS

No stitch

Purl on RS, knit on WS

Knit in the st below

From RS: slip st with yarn in back
From WS: Slip st with yarn in front

Repeat

Slip 1 st knitwise, k1, pass the slipped st over

Knit 2 sts together

Insert RH needle into the middle of the sts 3 rows below, knit a new st and place it onto the RH needle, k3, insert RH needle into the same st again and knit a new st, place it onto the RH needle. 3 sts have now turned into 5 sts.